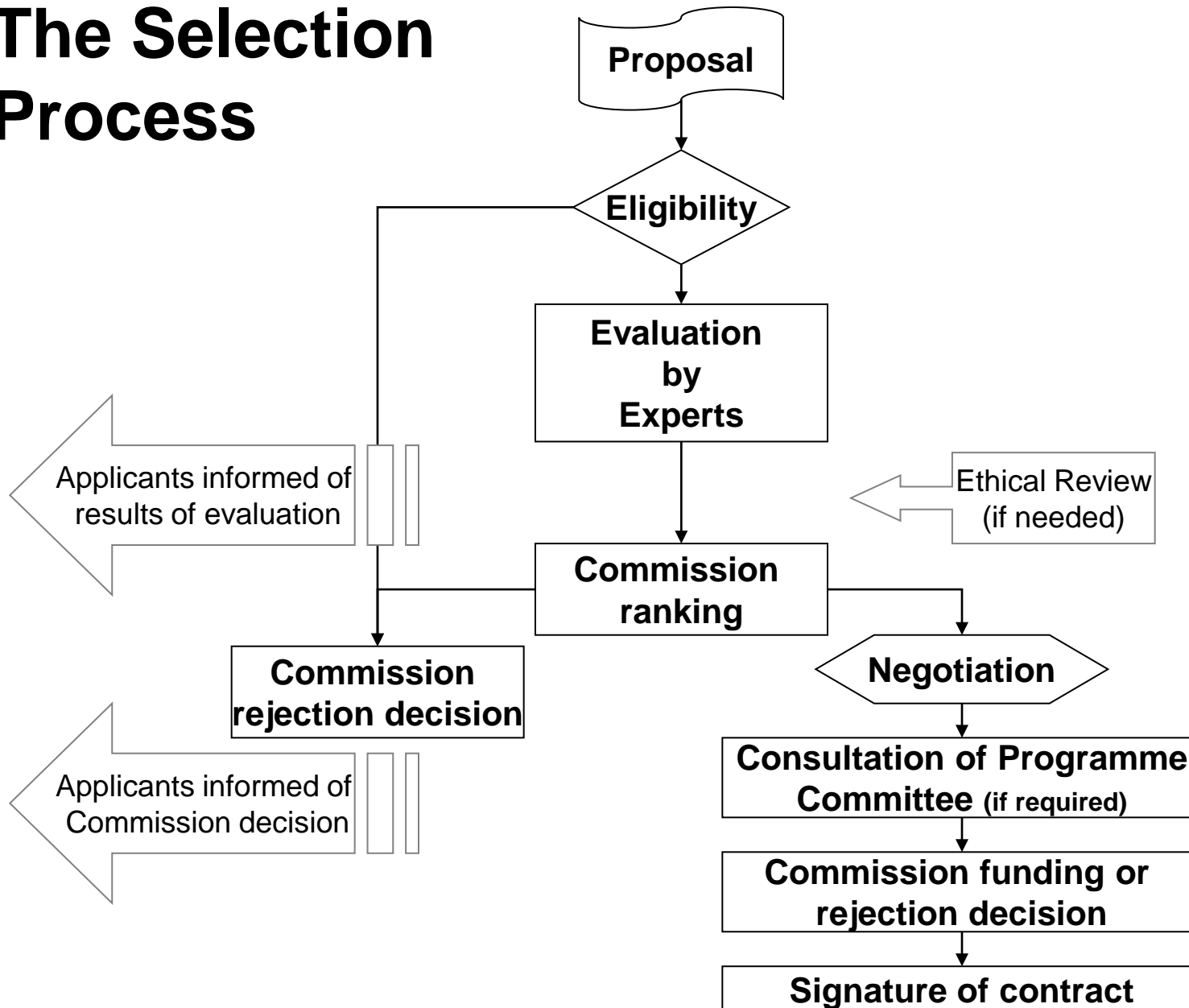




# Framework Programme 7

Evaluation Criteria

# The Selection Process



## Evaluation criteria applicable to Collaborative project proposals (IP or STREP)

<b>S/T QUALITY</b> <b>"Scientific and/or technological excellence"</b>  (relevant to the topics addressed by the call)	<b>IMPLEMENTATION</b> <b>"Quality and efficiency of the implementation and the management"</b>	<b>IMPACT</b> <b>"Potential impact through the development, dissemination and use of project results"</b>
<ul style="list-style-type: none"> <li>• Soundness of concept, and quality of objectives</li> <li>• Progress beyond the state-of-the-art</li> <li>• Quality and effectiveness of the S/T methodology and associated work plan</li> </ul>	<ul style="list-style-type: none"> <li>• Appropriateness of the management structure and procedures</li> <li>• Quality and relevant experience of the individual participants</li> <li>• Quality of the consortium as a whole (including complementarity, balance)</li> <li>• Appropriateness of the allocation and justification of the resources to be committed (budget, staff, equipment)</li> </ul>	<ul style="list-style-type: none"> <li>• Contribution, at the European and/or international level, to the expected impacts listed in the work programme under relevant topic/activity</li> <li>• Appropriateness of measures for the dissemination and/or exploitation of project results, and management of intellectual property.</li> </ul>

## Evaluation criteria applicable to Co-ordination & Support Actions proposals (CA or SA)

<b>S/T QUALITY</b> <b>"Scientific and/or technological excellence"</b> (relevant to the topics addressed by the call)	<b>IMPLEMENTATION</b> <b>"Quality and efficiency of the implementation and the management"</b>	<b>IMPACT</b> <b>"Potential impact through the development, dissemination and use of project results"</b>
<b>CA</b> <ul style="list-style-type: none"> <li>• Contribution to the co-ordination of high quality research</li> <li>• Quality and effectiveness of the co-ordination mechanisms, and associated work plan</li> </ul> <b>SA</b> <ul style="list-style-type: none"> <li>• Quality and effectiveness of the support action mechanisms, and associated work plan</li> </ul>	<ul style="list-style-type: none"> <li>• Quality of the consortium as a whole (including complementarity, balance) [for SA: only if relevant]</li> <li>• Appropriateness of the allocation and justification of the resources to be committed</li> </ul>	<ul style="list-style-type: none"> <li>• Appropriateness of measures for spreading excellence, exploiting results, and dissemination knowledge, through engagement with stakeholders, and the public at large.</li> </ul>

# Evaluation rules

---

Evaluation scores are awarded for **each** of the three criteria, **not** for the sub-criteria (bullet points).

The **relevance** of a proposal is considered in relation to the topic(s) of the work programme open in a given call, and to the objectives of a call. These aspects will be integrated in the application of the criterion "S/T quality", and the first sub-criterion under "Impact" respectively.

When a proposal is **partially relevant** because it only marginally addresses the topic(s) of the call, or if only part of the proposal addresses the topic(s), this condition will be reflected in the scoring of the first criterion.

Proposals that are clearly not relevant to a call ("out of scope") will be **rejected on eligibility grounds**.

---

# Evaluation marks

---

Each criterion will be scored out of 5. Half marks can be given.

- 0** The proposal **fails to address** the criterion under examination or cannot be judged due to missing or incomplete information
- 1 Very poor.** The criterion is addressed in a cursory and unsatisfactory manner.
- 2 Poor.** There are serious inherent weaknesses in relation to the criterion in question.
- 3 Fair.** While the proposal broadly addresses the criterion, there are significant weaknesses that would need correcting.
- 4 Good.** The proposal addresses the criterion well, although certain improvements are possible.
- 5 Excellent.** The proposal successfully addresses all relevant aspects of the criterion in question. Any shortcomings are minor.

No weightings will be applied. Thresholds will be applied to the scores. The threshold for individual criteria will be 3. The overall threshold, applying to the sum of the three individual scores, will be 10.



---

Questions ?